

The EMW Mentor

Email: recruiting@emwchina.com
Tel: 67617788 - Fax: 67640573 - Skype: Emwchina

Volume 1, Issue 1

www.emwchina.com

February 2009



Inside this issue:

Letter from Maggie	1
Don't Forget!	1
Teaching Tips	2
Holidays	2



Letter from Maggie

Welcome teachers to our newsletter. We intend to send you all a newsletter by email every 3 or 4 weeks just to give you an update on what is happening, a few teaching tips, and also to give you an opportunity to add any news from your school. We hope you will provide photos of your travels, or contributions for teaching tips that you feel other teachers may find useful. So please send in all those ideas.

We were all extremely sorry to see Jessie leave as for many of us she has worked extremely hard to

make sure our stay in China goes as smoothly as possible. She has been there to reassure us that she can take care of our problems – and what's more she does just that. I know that Jessie will always be successful in whatever endeavor she chooses in the future because she is so reliable, efficient and dedicated.

I know I speak for everyone when I say a big THANK YOU to Jessie – for making our “China Experience” such an awesome one. We couldn't have done it without you. Have a wonderful and happy life and best of



Jessie has moved on, but we recognize her hard work and dedication.

luck in your new position.

So on that note, good luck to all teachers next semester!

A handwritten signature in black ink, which appears to read 'M. Hale'.

Important Dates:

- First Day of most Schools—Feb.16
- Exams—June
- Summer Holidays—July - August

Don't Forget!

Semester plans

It's time to put together your Semester Plans for the second Semester. There are guides in the Seminar Information Book near the back.

Schedules

Please send in your new schedules as soon as they are settled. Remember many of you will not have any Senior 2 students until they have sat their College exams around April 8.

Team Meetings

These are really important so make sure you set aside a time each week where you can meet, discuss what is happening in your school, help each other with any teaching

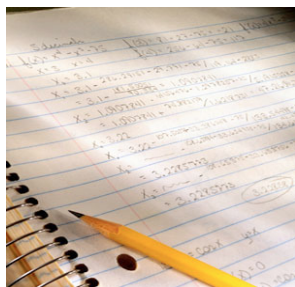
problems, share ideas and catch up. Make sure the responsibilities you have are shared around.

Income Statement

Some of you will need a letter of your earnings for taxation or student loan purposes. Please remember to write clearly what you need e.g. salary and/or taxation from ... to ..., and remember that abbreviations may not be understood by us e.g. W-2, FAFSA. We will send you a letter with an official stamp.



See bottom of next page for names.



Never underestimate the power of a notebook.

EMWChina.com

The EMWChina website now has sample tests available as well as resources for teachers.

Check it out at www.emwchina.com

Login and click on 'Downloads'

Teaching Tips - Notebooks and Pronunciation

Notebooks

Never underestimate the power of a notebook. It is a good idea for students to have at least two. They need to write down new vocabulary, examples of sentences, linking words, and many other things you give them in class.

These notebooks should be a resource for the students, and for you as a teacher. It gives you a real sense of achievement when you see the students flicking back the pages to find something they have forgotten, but know where to find the answer. For those schools where the teachers are after good results, you will need to give the students writing homework. More marking for you but

the students really improve rapidly so it is well worth the effort.

Students take notice of every comment you write in their writing books, so try and choose just one main error to correct in their writing and give an explanation of why it is wrong and how to correct it, and usually they will never make the same mistake twice. I also put a wiggly line under a word which is correct but a better word can be used, and of course I give them the alternative word. This really encourages them to use new vocabulary.

Pronunciation

TH is one of the most difficult sounds for Chinese

Students to produce. Many say sink not think: sank you not thank you. Three, moth, third, Thursday. They must learn to blow out as they say these words.

To make the point clear, give them a tissue each. If they say the word moth correctly, they will blow air out of their mouths, and the tissue will move. You need to demonstrate of course. After this you just need to correct them every time they say a word with the TH incorrectly pronounced.

Holidays

As you have all been on holiday recently, I would like you to send in a few pictures, with a short explanation of where you went and how you enjoyed it. We will put one of these on each newsletter in future. I am including one of mine this month to give you idea of what we are looking for.

Last July Gaylene Hana, Keith Hinkley and I set off for Xiamen in Fujian Province to visit the Tulou

which were about 3 hours north of there. These huge, usually round buildings were built by the Hakka people many years ago as both a dwelling for a whole village of up to 600 people as well as a fortress. There is usually a well in the centre and a small shrine for the ancestors. The animals lived on the ground floor and in the centre; grain was on the next level and people on the higher levels. There were usually only the very young and the

elderly still living in the ones we visited, and I can understand why as the pluming consisted of a large earthenware container with a lid on it, that would have to be carried down 4 flights of rickety stairs every morning to be emptied. Gaylene and I stayed one night in a Tulou but Keith preferred the local hotel.



Looking down on a group of Tulou.



An elderly inhabitant



The shrine for the ancestors in the centre.

The Team: (picture on first page from left)

Karen Li, Jessie Liu, Xavier De Pauw, Maggie Whale, Ouyang Chenyan, Jennifer Jin, Scarlett Peng, Fan Yanping, Feifei Guo (missing from image: Niew Wang)



EMWChina

Rm201, 10th Block, No.1 Nanfangzhuang
Fengtai District, Beijing
100079, China

Phone: 67617788

Fax: 67640573

E-mail: recruiting@emwchina.com